

Joh  
La

Troy University  
J. Long School of Music  
Ensemble Auditions  
Fall 2024  
Percussion

Snare

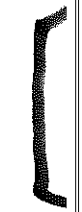
*Háry Ján*

Zoltán

II. Viennese I

Two Ex

Tam





4



6



A



# Xylophone

*Háry János – Suite*

Zoltán Kodály

VI. Entrance of the Emperor and His Court

Two Excerpts

1171

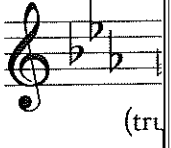
1171

1171

1171

1171

5



# Timpani

*Concerto for Wind Ensemble*

Karel Husa

I. Drum Ceremony and Far fare

Two Excerpts



# CON

## Timpani

♩ =



7 *ff*  
gliss.

15 *a tempo*  
6

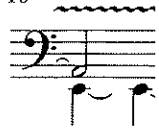
19 **A** Più vivo  
3

24

30  
6  
*mp*

34 **B**  
*f ff*

40

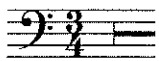


47

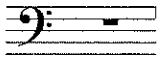


*mp sub.*

58



110 **G**



122 **H**



132

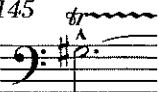


139



*f cre*

145



*fp cres*

2

2a

—  
—  
—

3a

—  
—  
—

4a

—  
—  
—

4b

—  
—  
—

5a

—  
—  
—

5b

—  
—  
—

5c

—  
—  
—

57

Musical notation for measure 57, bass clef, eighth notes.

61

Musical notation for measure 61, bass clef, eighth notes, dynamic markings *p* and *f*.

68 **F** 6

Musical notation for measure 68, bass clef, dynamic marking *f*.

92

Musical notation for measure 92, bass clef, dynamic marking *p*.

$\text{♩} = 144-152$

Musical notation for measure 100, bass clef, dynamic marking *p*.

**A**

119 (D# = Eb)

Musical notation for measure 119, bass clef, dynamic marking *p*.

83 **D** 28 **E**

Musical notation for measure 127, bass clef.

131

Musical notation for measure 131, bass clef, quarter notes, dynamic marking *p*.

136

Musical notation for measure 136, bass clef, quarter notes, dynamic marking *p*.



3

.....

3

.....

3

.....

3

.....

42

.....

43

.....

44

.....

45

.....

464



*mp cresc.*

471



*mf*

479



*p cresc.*

486



*f p*

509



*f*

516

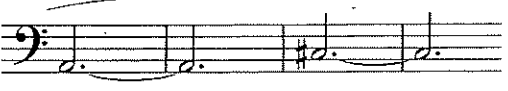


531  $\text{♩} = 60$  *freely*



*(f) < più f ff*

547



*a poco*

563



*fp < mf < fp*